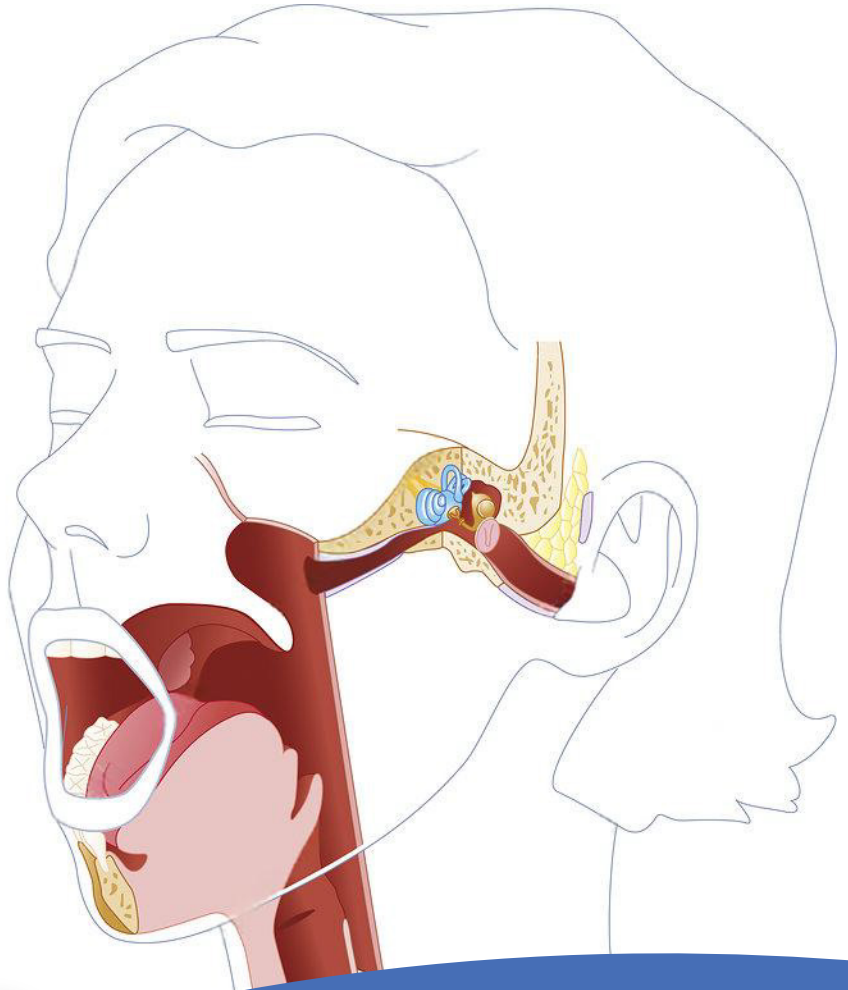


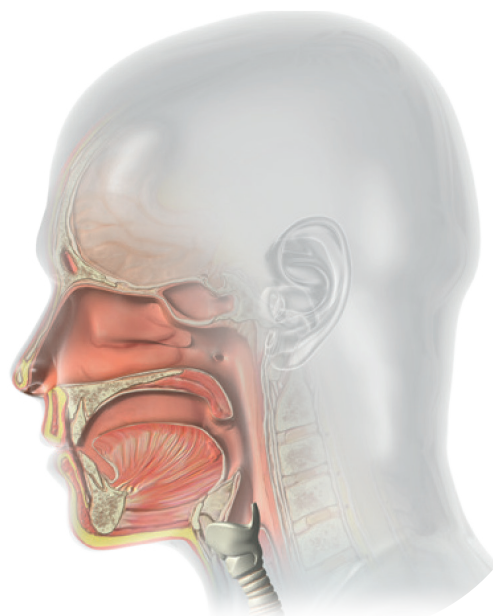
Minimally invasive laser therapies in ENT



Minimally Invasive

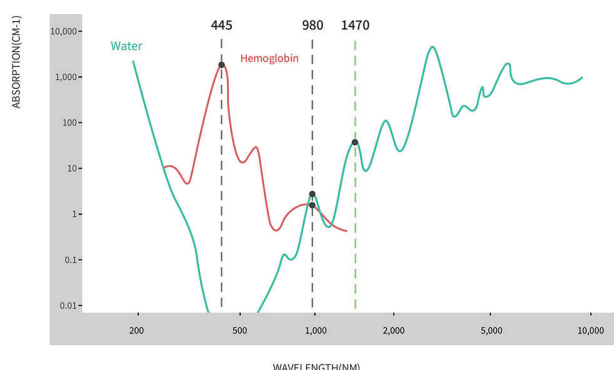
ENT Laser Treatment

Laser is now universally accepted as the most advanced technological tool in various surgery specialties. However, the properties of all lasers are not alike and surgeries in the ENT field have advanced significantly with the introduction of Diode Laser. It offers the most bloodless surgery available today. This laser is especially suited for ENT works and finds application in various aspects of surgery in the ear, nose, larynx, neck, etc. With the introduction of diode ENT Laser, there has been a significant improvement in the quality of ENT surgery.



What Wavelength

Is Recommended?



The 980nm wavelength is well absorbed by both water and hemoglobin, while the 1470nm wavelength has even higher absorption in water, and the 445nm wavelength is more efficiently absorbed by hemoglobin.

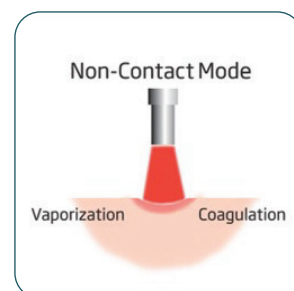
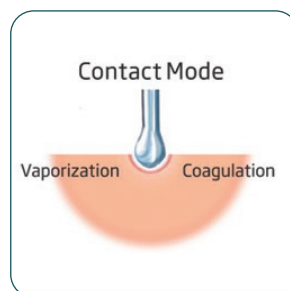
Compared to CO₂ lasers, our diode laser offers superior hemostasis, effectively preventing bleeding even in highly vascular structures like nasal polyps and hemangiomas. The DIMED ENT laser system enables precise excisions, incisions, and vaporization of hyperplastic and tumorous tissue with minimal side effects, ensuring safe and effective surgical outcomes.

Unique Technology

at Your Fingertips

Bioluminous is ideal for contact mode surgeries where laser fiber tip is in direct touch with the targeted tissue. This mode is preferred for vaporization of tissue and photo-coagulation. The lower power settings help achieve coagulation while the higher power bands help undertake vaporization.

In non-contact mode, the tip of the laser fiber remains at a distance from the tissue. This mode is ideal for tissue photo coagulation.





Markedly improved hemostasis and control

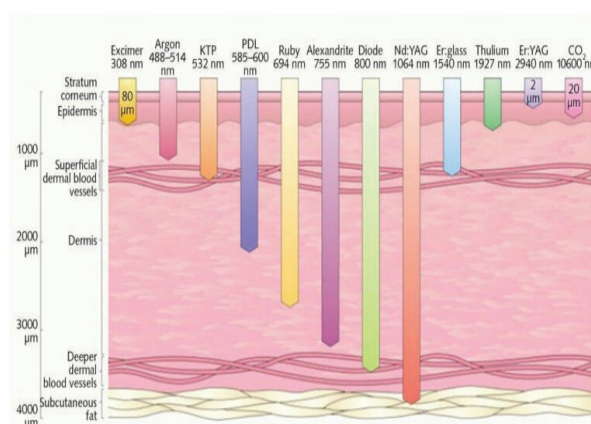
The 980 nm wavelength is highly absorbed by hemoglobin, while the 1470 nm wavelength is primarily absorbed by water. This unique combination allows the thermal penetration depth of the Bioluminous laser to be precisely tailored to the specific requirements of each ENT procedure with just a fingertip adjustment. As a result, procedures can be performed safely and accurately near delicate structures while minimizing damage to surrounding tissue.

Compared to CO₂ lasers, this specialized wavelength set offers significantly improved hemostasis, effectively preventing bleeding even in highly vascularized tissues such as nasal polyps and hemangiomas. The Bioluminous laser system enables precise excision, incision, and vaporization of hyperplastic and tumorous tissue with minimal side effects

Advantage over

CO₂ and KTP

The new 450nm wavelength diode laser combines the benefits of both CO₂ and KTP lasers, offering versatility for both non-contact and contact mode procedures via fiber. This allows for gentler and more precise cutting treatments, even at lower power levels. With outstanding photocoagulation and exceptional hemoglobin absorption, the 450nm laser is ideal for specialized applications in otology, rhinology, and laryngology.



APPLICATIONS

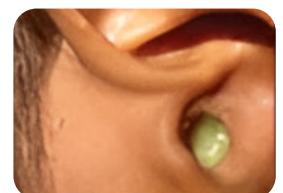
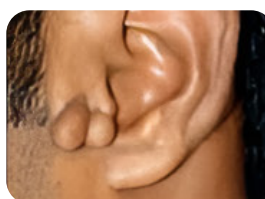
EAR/OTOLOGY

With its ultra-thin 400µm fiber, our laser ensures safe, precise treatment of delicate inner ear structures using the contact method, minimizing unintended energy exposure.

Laser energy is delivered in short pulses upon direct contact, ensuring immediate absorption and minimal thermal damage.

Laser paracentesis is a minimally invasive, bloodless procedure that keeps the eardrum opening patent for about three weeks, promoting faster healing.

- Paracentesis
- Mucosa Hyperplasia
- Stapes Surgery
- Removal of cholesteatoma Cysts
- Accessory auricle
- Tumors of the inner ear
- Hemangioma
- Myringotomy
- Cholesteatoma
- Tympanitis



NOSE

- Nasal Polyp, Rhinitis
- Turbinate treatment
- Septum deformation
- Cysts & Mucoceles
- Epistaxis
- Stenosis & Synechia
- Sinus Surgery
- Dacryocystorhinostomy (DCR)
- Nasal Sinus Surgery
- Tonsillotomy, tonsillectomy/LAUP
- Laser assisted tuboplasty of the eustachian tube with a special micro endoscope



THROAT/DRAL/LARYNX SURGERY

- Polypectomy in area of vocal ligaments
- Polyps-/papilloma resection
- Epistaxis treatment
- Laryngeal carcinoma
- Cysts, mucous cysts
- DCR treatment/Lacrimal Surgery
- Removal of stenosis in lacrimalis
- Synechia, stenosis in endonasal structures
- Tumor, Granuloma resection
- Congenital larynx stenosis
- Hemangiomas
- Morbus Osier
- Uvulopalatoplasty
- Tonsillotomy
- Glossectomy
- Vocal cord polyps
- Epiglottectomy



Otolaryngology

Breakthrough

Lasers have been accepted as the latest advanced surgical tool. Known for their accuracy and efficiency, lasers provide safe treatments and instill a sense of confidence into the surgeons as well as the patients. The field of Otolaryngology has benefitted significantly from today's diode lasers.

Surgeons can confidently perform 100% bloodless surgeries with confidence. Bioluminous Laser is perfect for ENT surgeries including nose, ear, neck, larynx and more. Earlier, CO2 lasers, Argon lasers and Nd:YAG lasers were widely used for ENT applications. Today, however, diode lasers have advanced significantly to offer all these benefits in a single package. In each and every characteristic, be it coagulation effect, absorption degree or tissue cutting; diode lasers offer more precision and efficiency compared to all these lasers.

Bioluminous is a lightweight and portable 980nm wavelength Diode laser with a fiber optic delivery system offering affordable and efficient surgical procedures.

Advantages in ENT

- Bloodless Treatment with High Precision
- Fast and gentle outpatient treatments
- Minimally-invasive surgery using flexible fiber optics
- Easy endoscopy based operations
- Easy endoscopy based operations
- Quick healing
- Improved patient compliance
- Minimum to nil postoperative complications



Why Bioluminous ?

- 10" Super LED, Multi Color Display
- Set Up Multiple Profiles
- Patients Database
- Internet Connectivity
- AI Connectivity
- The Gallery
- No Fiber Lock
- 5 Year Warenty
- The Printer

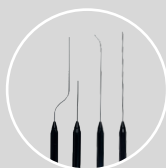


During EVLA, the ultrasound screen displays dual imaging on bioluminous screen.

Accessories



ENT Handpiece



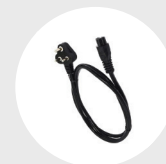
Safety Goggles



Foot Switch



Portable Carry Case



Power Cord

Basic Technical Parameters

Model

: Bioluminous A1,A2,A3,C1,C2,C3,E1,M3,M4,M5,M6,M7,M8,M9,G1,G2,L1,L2,L3,X1,X2,X3,Z1,Z2,Z3

Laser type

: High Power GaAlAs Diode Laser

Wavelength

: 1470/980/635/1940nm

Max Power

: 10W/15W/20W

Aiming beam

: 635nm/1.4mW Max or 515nm/2.5mW max

Operating Mode

: CW, IMP.

Pulse time

: 0.05 ms-1000 ms

Beam Delivery

: Fiber optic with SMA 905 Connector

Optical Fiber

: SMA 905 Connector

Beam Emmiton initiation

: Footswitch

Display

: 10.1 Inches Multi Color Touch Screen with 1920*1200 resolution

Cooling System

: Internal, Air and Thermoelectric Cooling

Power supply of AC adapter

: Inbuild

Laser Dimensions

: L27.5 x W28.3 X H18.6cm

Laser Weight

: 8 kg

Laser case dimensions

: 53cm x 38cm x 23cm

Weight of laser with cases

: Approx. 13 kg

Controller

: Microprocessor

Class of Medical Device

: IIb

Laser Safety Class

: 4

Electrical Safety Class

: I type B

Housing Protection Degree

: IP20B

UK OFFICE

LUMINARY STRATOS MEDICAL SYSTEM PVT. LTD.
Bioluminous Global 10, Ashwood Drive,
Royton, Greater Manchester,
United Kingdom – OL25TW

BENGALURU OFFICE

LUMINARY STRATOS MEDICAL SYSTEM PVT. LTD.
H1, 4th Floor, Shree #536, Near Ayyappaswami Temple,
Bannerghatta Road, Bangalore South,
Bangalore 560076, Karnataka



Vieonix Health Systems
Future in your hands



258246



9001:2015

To Know More About VHS

Visit - www.vieonix.com

For Enquiries Please Write Us To sales@vieonix.com

Contact - +91 8318181362, +91 6390867524